


# NOVI ULAZ U SPLIT I MOST PREKO KAŠTELANSKOG ZALJEVA

Splitsko-dalmatinska županija

Split, 07/2024

# KONTEKST

- Most je dio šireg projekta
  - Novi ulaz u Split
  - Prometne potrebe
  - Strateški projekt RH
  - Faze
- 
- A decorative graphic consisting of several parallel white lines of varying lengths, slanted upwards from left to right, located in the bottom right corner of the slide.

# FAZE PROJEKTA



# IZGRADNJA MOSTA PREKO KAŠTELANSKOG ZALJEVA

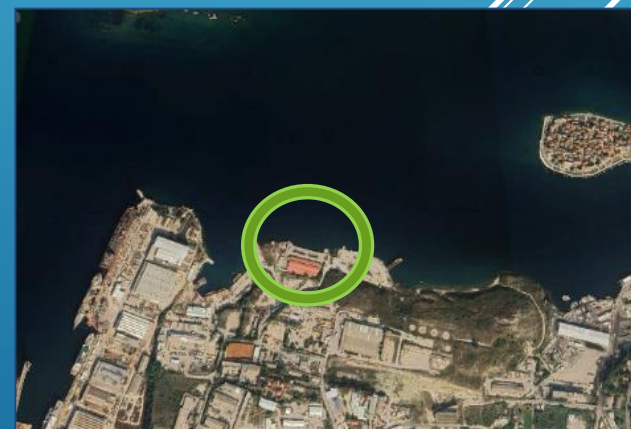
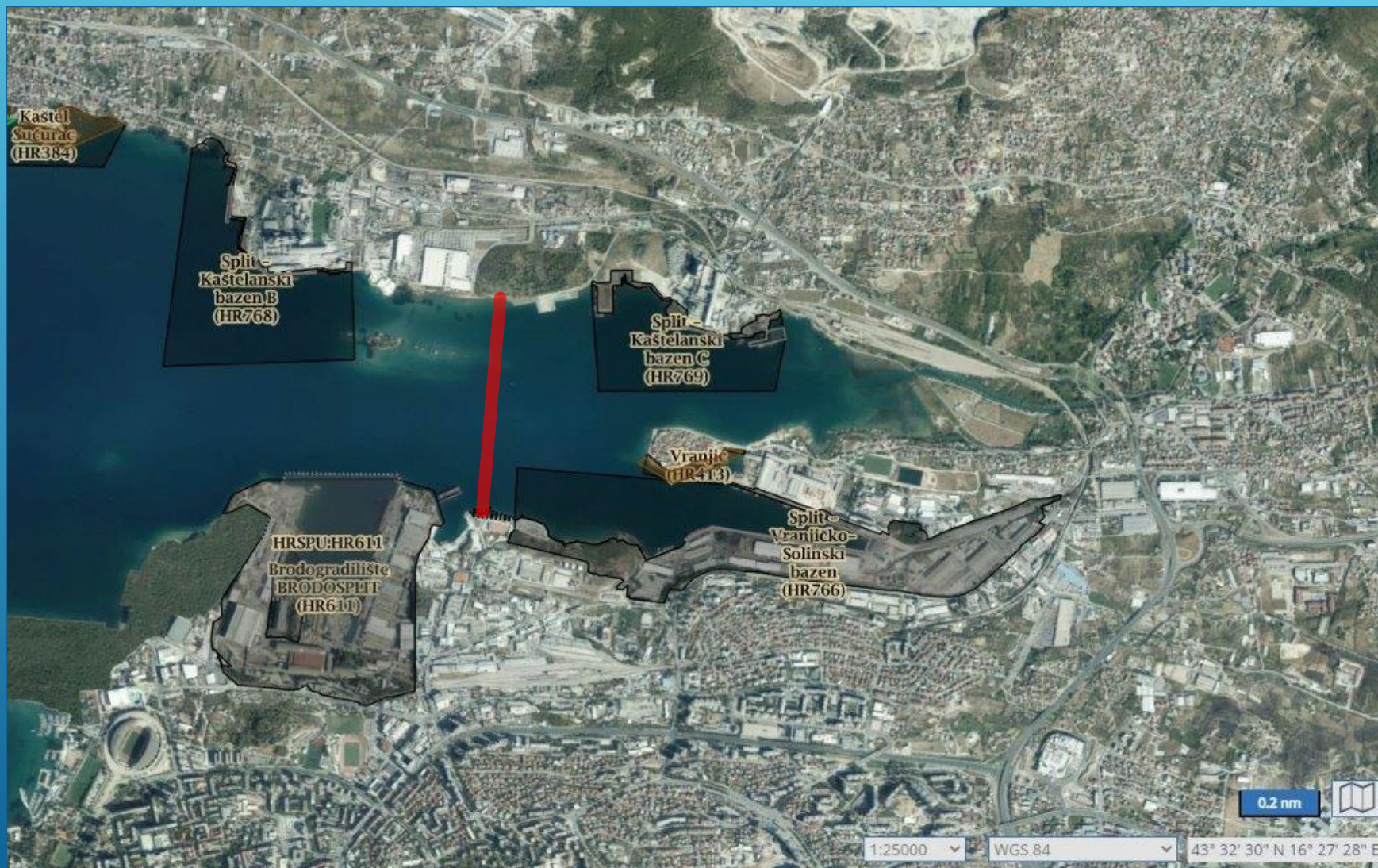
Lučka uprava Split

Split, 06/2024

Pomorski fakultet u Rijeci

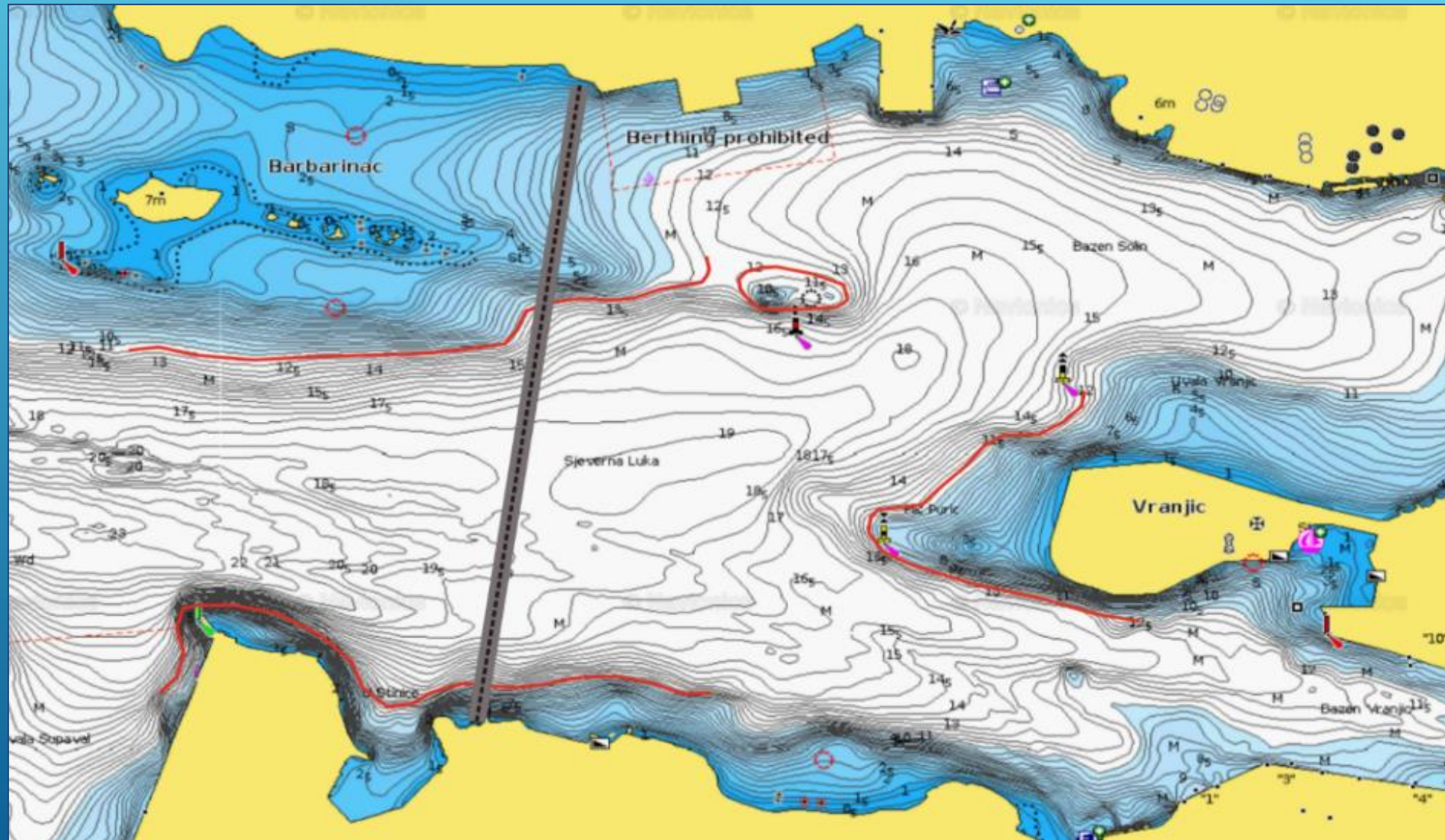


# PLANIRANA POZICIJA MOSTA





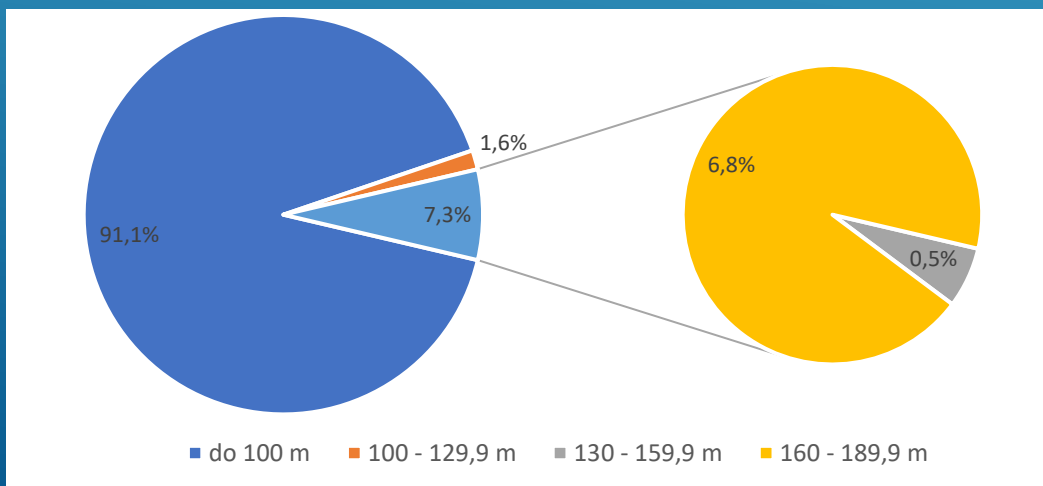
# DUBINE PRILAZA



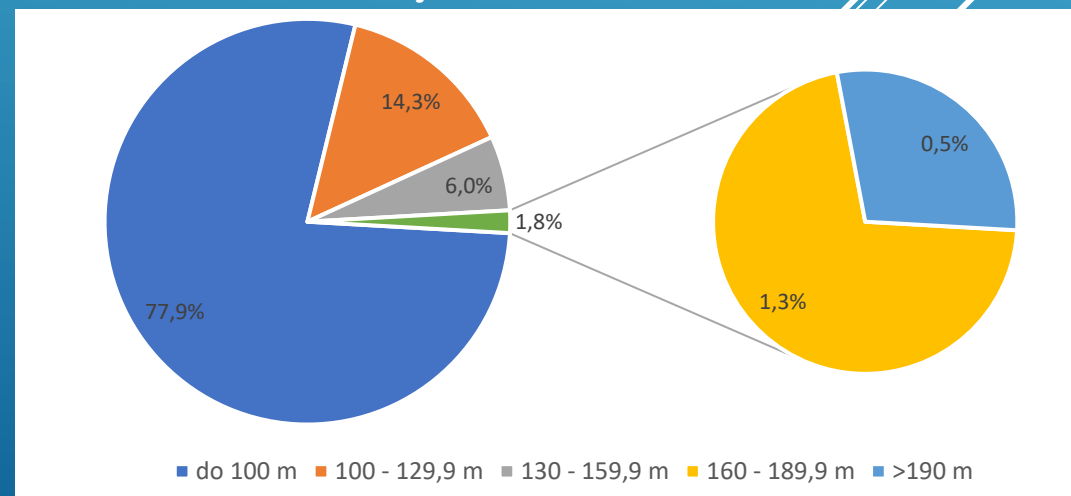
# PODJELA BRODOVA PO VELIČINI 2018. - 2022.

Duljina broda	bazen Gradska luka	Kaštelanski bazen B	<b>Kaštelanski bazen C</b>	Kaštelanski bazen D	<b>Vranjičko- Solinski bazen</b>
<b>do 100 m</b>	73.227	2.557	<b>760</b>	1.197	<b>1.950</b>
<b>100 – 129,9 m</b>	6.385	183	<b>13</b>	2	<b>359</b>
<b>130 – 159,9 m</b>	398	18	<b>4</b>	-	<b>149</b>
<b>160 – 189,9 m</b>	52	2	<b>57</b>	-	<b>32</b>
<b>&gt;190 m</b>	583	-	-	-	<b>13</b>

Kaštelanski bazen C



Vranjičko-Solinski bazen



# NAJVEĆA DIMENZIJA BRODOVA 2018. - 2022. (CIMIS)

Bazen	Ime broda	Vrsta broda	LOA (m)	B (m)
<b>Bazen Gradska luka</b>	MSC Fantasia	Brod za kružna putovanja	<b>333</b>	<b>38</b>
<b>Kaštelanski bazen B</b>	Harriett	Brod za prijevoz rasutih tereta	<b>180</b>	<b>23</b>
<b>Kaštelanski bazen C</b>	Eco Fleet	Brod za prijevoz tekućih tereta	<b>184</b>	<b>27</b>
<b>Kaštelanski bazen D</b>	SY A	Jahta	<b>143</b>	<b>25</b>
<b>Vranjičko-Solinski bazen</b>	Viking Star	Brod za kružna putovanja	<b>228</b>	<b>34</b>
	Anatoli	Brod za prijevoz rasutih tereta	<b>200</b>	<b>32</b>



# ŠIRINA PROLAZA

Referentni brodovi	Loa [m]	B [m]	T [m]	Najmanja širina prolaza
1. MV Anatoli - Najveći brod koji je uplovio u Sjevernu luku – BULK	200	32	13,4	132 m (tegljači)
2. Stena P-max – klasa tankera do 200 m najveće širine na tržištu	183	40	13,0	158 m (tegljači)
3. Viking Star - Kruzери	228	29	6,3	83,6 m

Planirana širina mosta ~ 200 m



Max širina plovila ~ 60 m!

Dubine ispod prolaza ~ 18-19 m

# VISINA PROLAZA

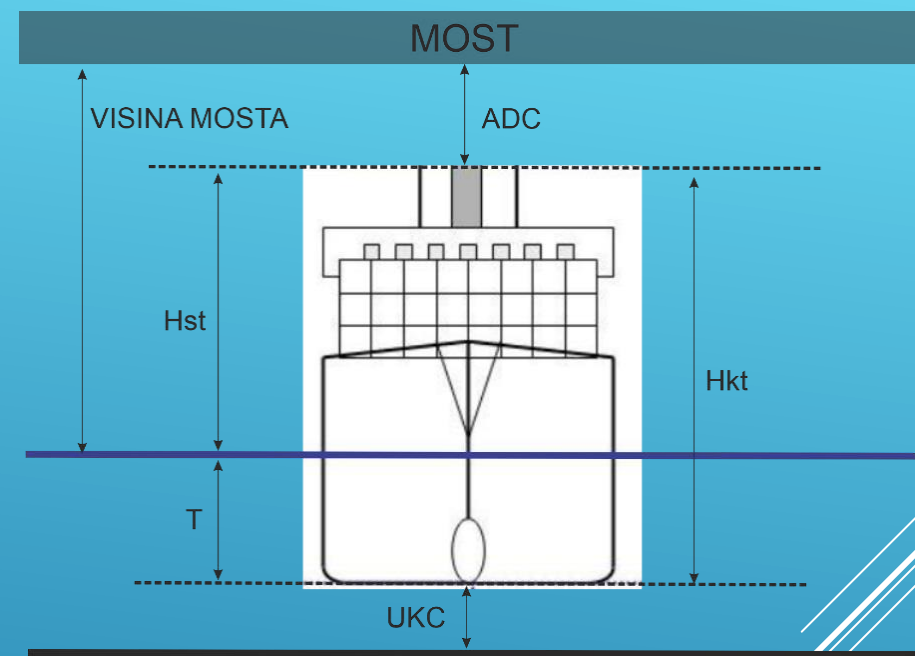
Referentni brodovi	Visina broda / klase [m]	Najmanja visina mosta
Brodovi za prijevoz rasutog tereta	Anatoli Loa 200 m = <b>48,6 m</b> Klasa do 230 m (balast) = 48 m	<b>51,03 m</b>
Brodovi za prijevoz tekućeg tereta	Lady Rina Loa 183 m = 47,2 m Klasa do 229 m (balast) = <b>48 m</b>	<b>50,4 m</b>
Kruzeri	Viking Star Loa 228 = 44 m	<b>46,2 m</b>
	Loa 250-270m ~ 52 m	<b>54,6 m</b>
	Loa do 300 m ~ 55 m	<b>57,75 m</b>

Kontejneraši – problem gaza na vezu, dubine na vezu ~ 10m!

STAT Loa 180 - 220 m visina < 50 m

PIANC Klasa Loa do 170 m (balast) visina ≈ 49 m

Klasa Loa >170 m (balast) visina ≈ 54 m



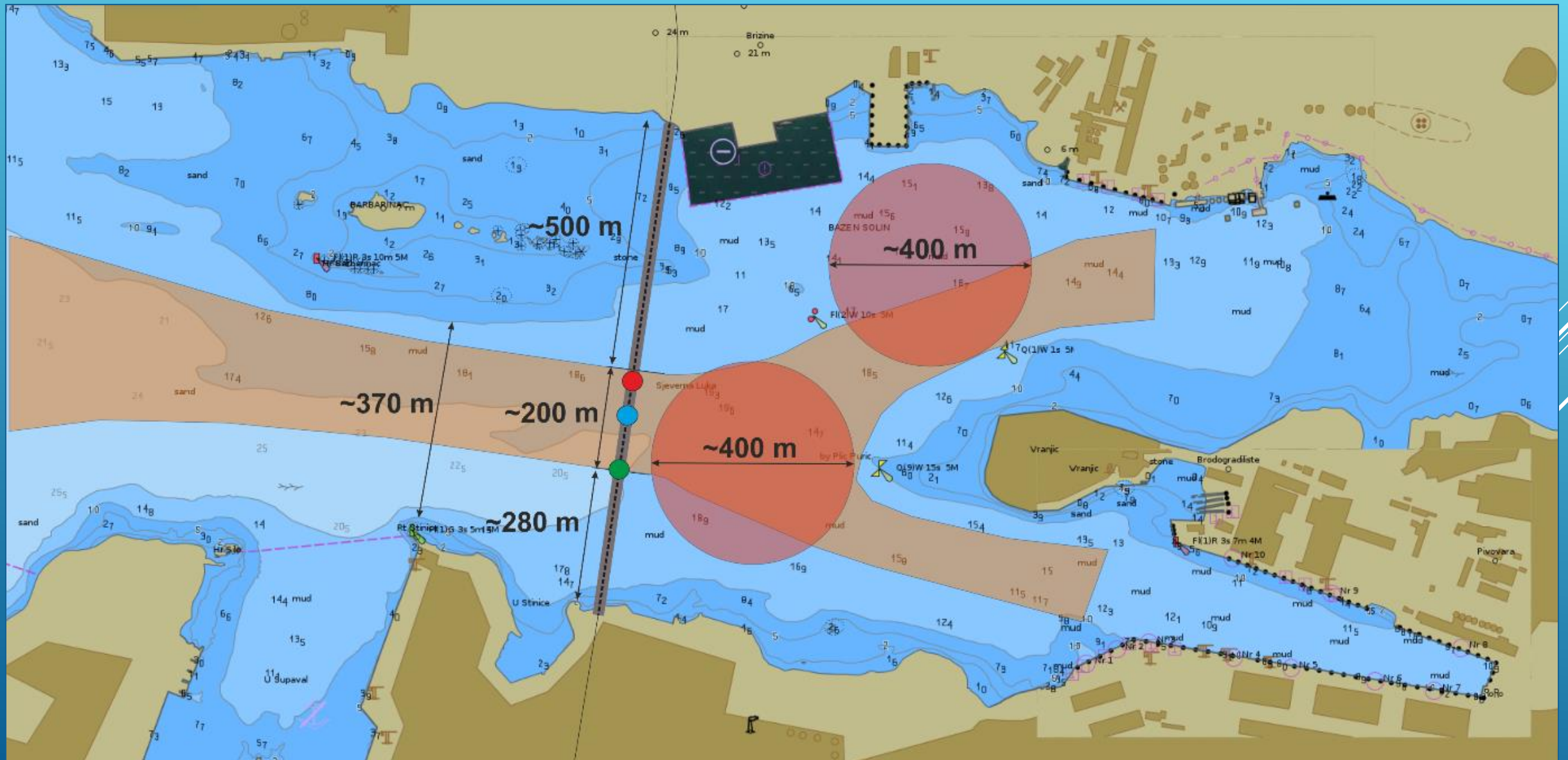
**ADC = 5% Hst ili najmanje 2m**

**Max visina mosta = 55 m**



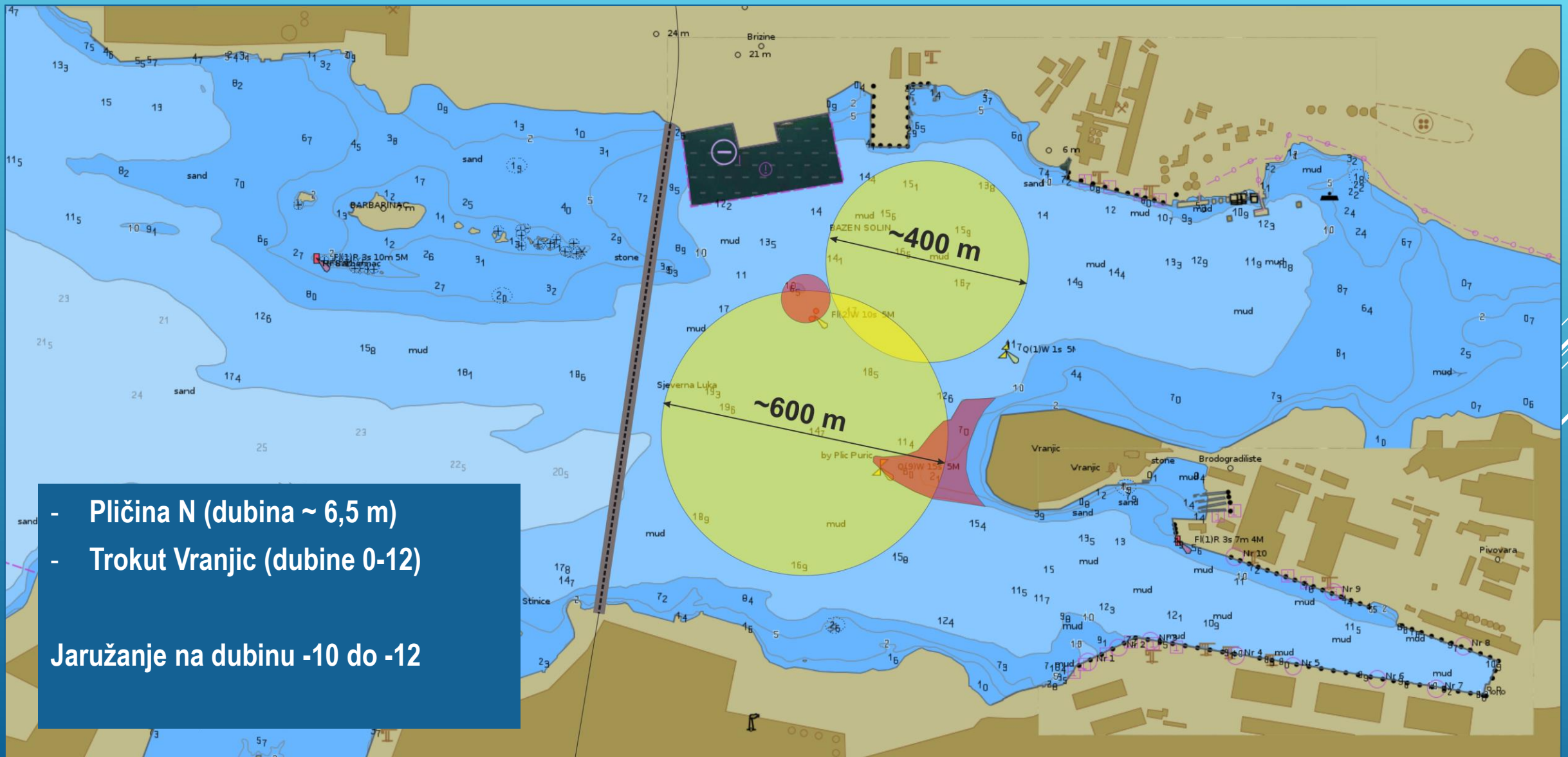
**Max visina plovila = 52,4 m!**

# MANEVARSKA PODRUČJA 1



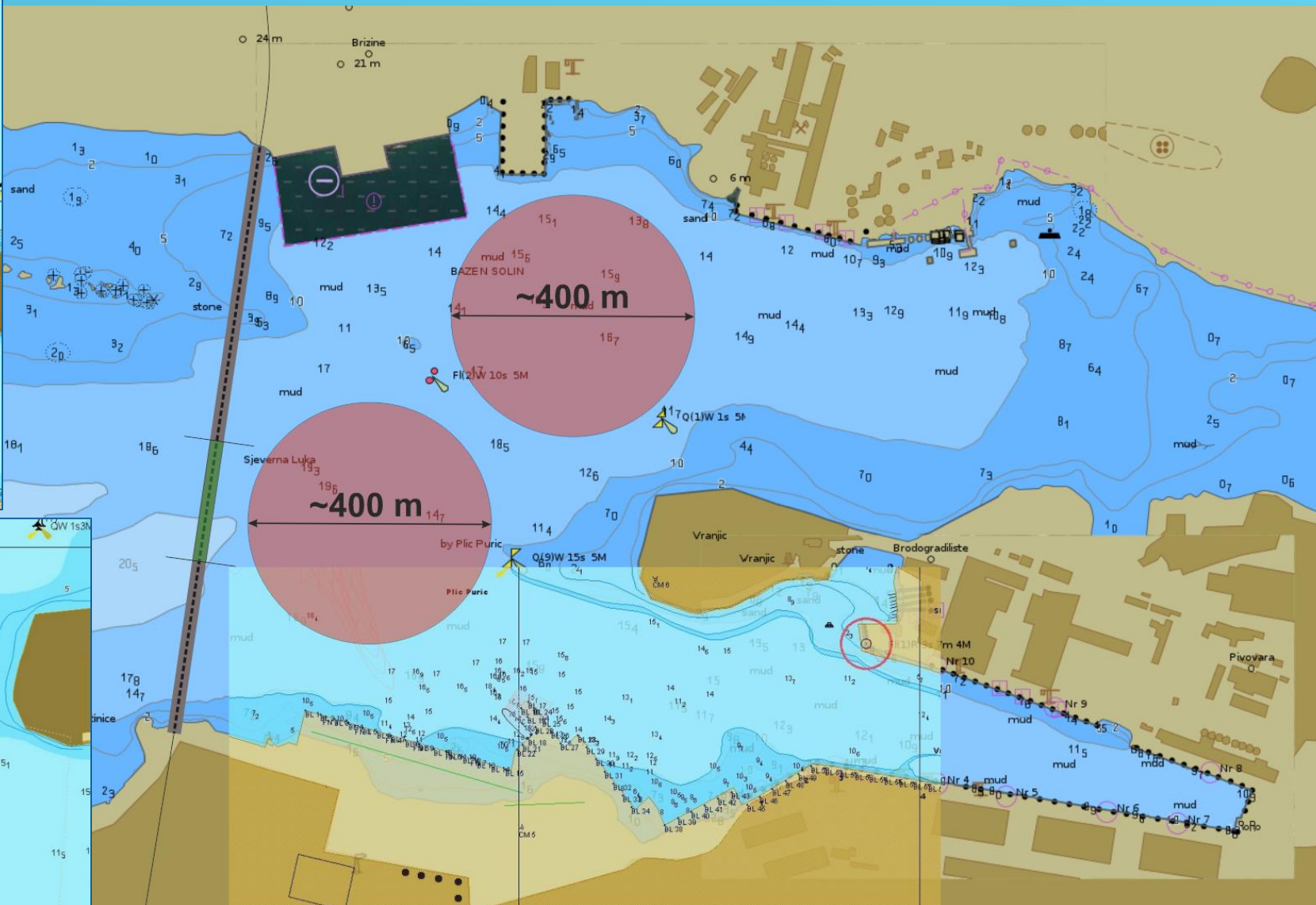


# MANEVARSKA PODRUČJA 2



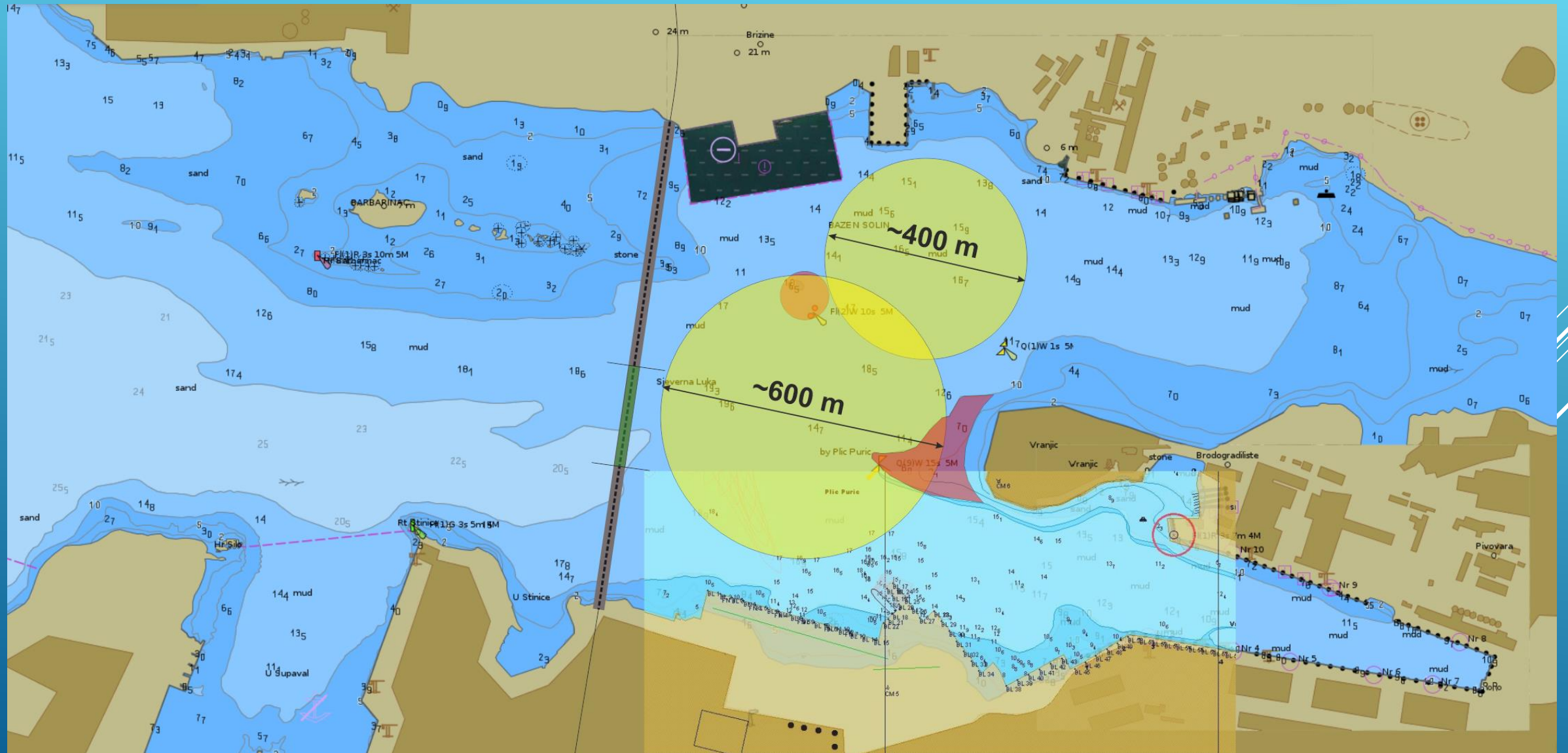
- Pličina N (dubina ~ 6,5 m)
  - Trokut Vranjic (dubine 0-12)
- Jaružanje na dubinu -10 do -12

# MANEVARSKA PODRUČJA 1 + STINICE





# MANEVARSKA PODRUČJA 2 + STINICE

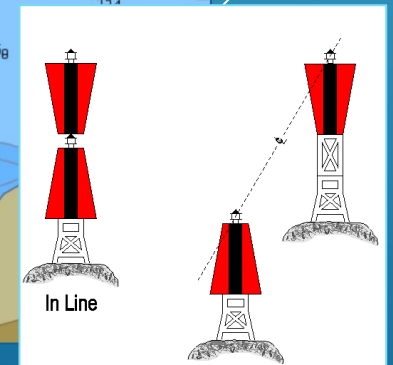
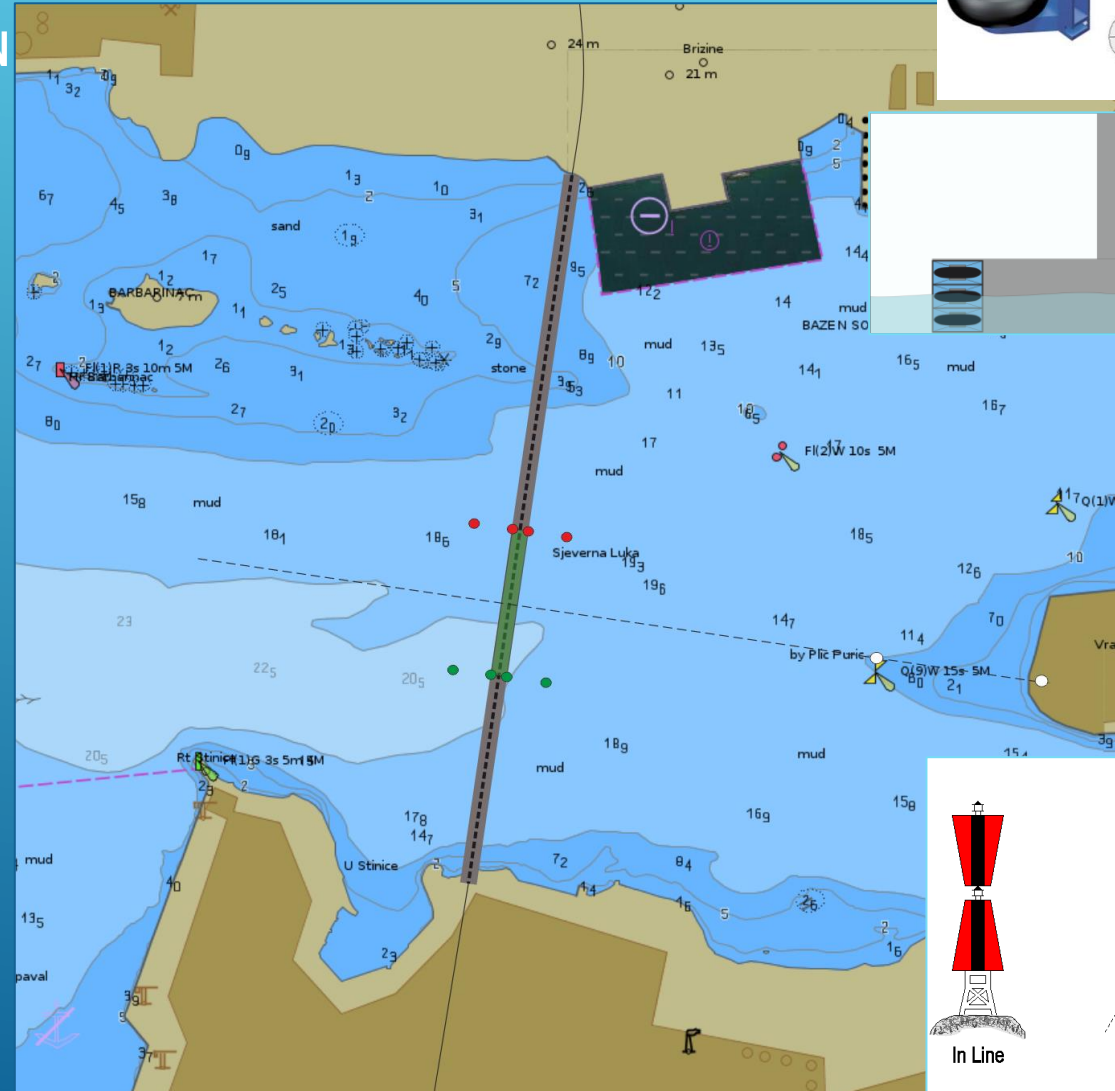
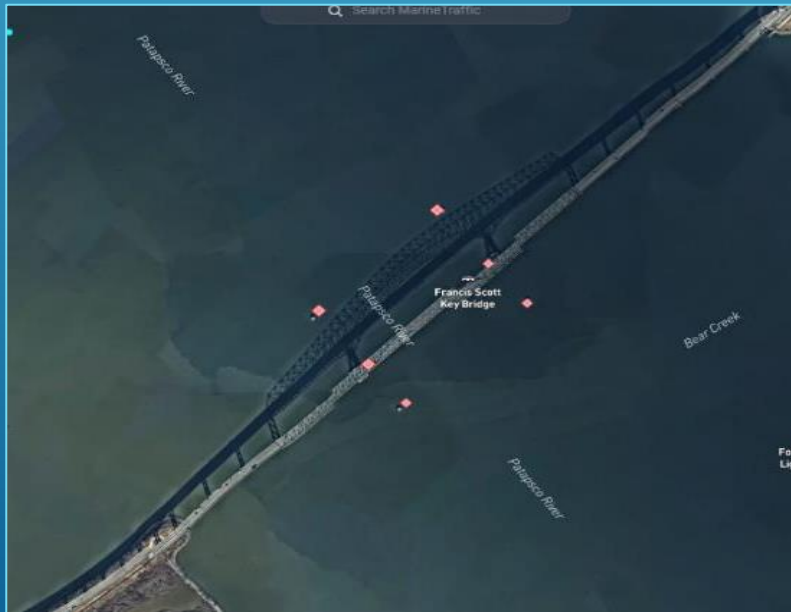
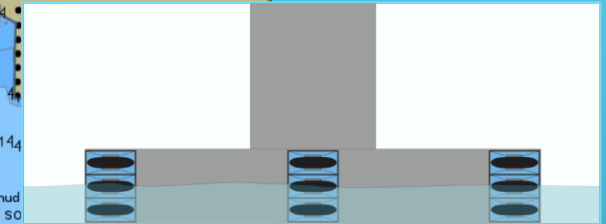
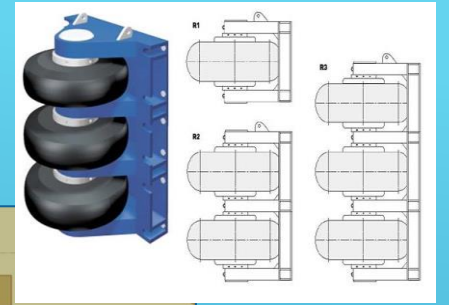
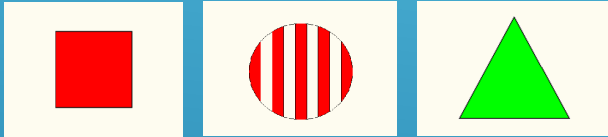




# OZNAČAVANJE PROLAZA

## Oznake:

- Lateralne oznake na mostu (dnevne i noćne)
- Jedan red plutača ispred i iza (~ 50 m) s AIS AtoN
- Pokriveni smjer na Vranjicu (~098°)



# TEGLJAČI / BRZINA

